



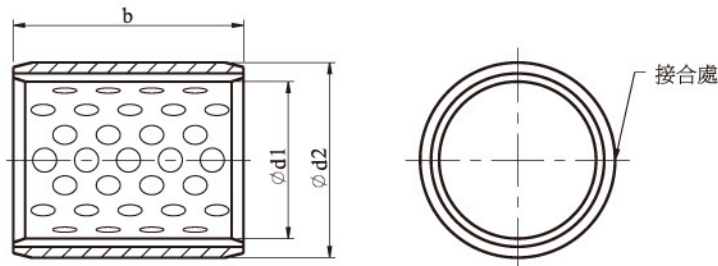
SUN HOIST

LD 系列雙層金屬軸承

標準襯套



LD-B



單位：mm

產品代碼	尺寸 (mm)		長度b (公差 ± 0.25 mm)													
	d1	d2	10	15	20	25	30	35	40	50	60	70	80	100		
LD-B	10	12	●	●	●											
	12	14	●	●	●											
	13	15	●	●	●											
	14	16	●	●	●	●										
	15	17	●	●	●	●										
	16	18	●	●	●	●										
	17	19	●	●	●	●										
	18	20	●	●	●	●										
	20	23	●	●	●	●	●									
	22	25		●	●	●	●	●								
	24	27		●	●	●	●	●								
	25	28		●	●	●	●	●								
	28	32		●	●	●	●	●								
	30	34		●	●	●	●	●	●							
	32	36			●	●	●	●	●	●						
	35	39			●	●	●	●	●	●	●					
	40	44			●	●	●	●	●	●	●					
	45	50			●	●	●	●	●	●	●					
	50	55			●	●	●	●	●	●	●	●				
	55	60			●	●	●	●	●	●	●	●				
60	65				●	●	●	●	●	●	●	●				
65	70					●	●	●	●	●	●	●				
70	75						●	●	●	●	●	●				
75	80							●	●	●	●	●	●			
80	85								●	●	●	●	●	●		
85	90									●	●	●	●	●	●	
90	95										●	●	●	●	●	

產品代碼	尺寸 (mm)		長度b (公差 ± 0.25 mm)													
	d1	d2	10	15	20	25	30	35	40	50	60	70	80	100		
LD-B	95	100												●	●	
	100	105												●	●	
	105	110												●	●	
	115	120												●	●	
	120	125												●	●	
	125	130												●	●	
	130	135												●	●	
	135	140												●	●	
	140	145												●	●	
	150	155												●	●	
	155	160												●	●	
	160	165												●	●	
	165	170												●	●	
	170	175												●	●	
	175	180												●	●	
	180	185												●	●	
	200	205												●	●	
	205	210												●	●	
	210	215												●	●	
	215	220												●	●	
220	225												●	●		
230	235												●	●		
240	245												●	●		
250	255												●	●		
280	285												●	●		
300	305												●	●		

如何訂購： 產品代碼 - d1 X b - B - 潤滑表面型式 - 油溝方式 - 接合方式 - 合金符號

例 LD-10 20 B - P - 4 - S - LD1:

內徑 / 長度 / 襯套 - 潤滑表面型式 - 油溝方式 - 接合方式 - 合金符號

旋轉花鍵

精密滾珠螺桿

螺桿支撐座

聯軸器

自潤軸承

萬向接頭

技術指引